

# **FY2008 Marshall County Central Point of Coordination Annual Report**

---

This report will summarize the Marshall County Management Plan for Fiscal Year 2008`. The Marshall County MH/DD advisory board consists of 13 persons with representation from two family members, three consumers, 6 providers, 1 Area Education Agency and 1 Targeted Case Management.

At the meeting on May 21, 2008, the MH/DD advisory board approved a recommendation to not do the consumer survey's as has been done in the past. In an attempt to reduce duplication in survey's of the same consumers from provider's & case management, the decision was to utilize the survey's provided to us by those agencies and targeted case management for quality assurance. No issues related to the CPC process has been identified in these surveys. A survey was sent to 50% of the consumers of the Marshall County Social Worker, these results are included in this report. The Marshall County CPC and social worker survey and Targeted case management survey results are included in this report. Quality assurance with providers is through the County Rate Information System (CRIS) for negotiation of services and rates.

## **APPEALS**

No appeals were received in FY08

## **AMENDMENTS TO MANAGEMENT PLAN**

No amendments to the Marshall County Plan in FY08

## **REPORTS INCLUDED**

Department Activity  
Quality Assurance Consumer survey for Marshall County Social Worker  
Department of Human Services Targeted Case Management survey  
Management Plan Goals Review  
Actual Provider Network  
Summary of Historical Services.  
Total Expenditures by COA Code and Disability Type  
Mental Health System Growth/Loss Report  
Unduplicated Number of Persons Served by COA Code and Disability Type  
Persons Served – Age Group by Diagnostic Category  
Waiting Lisa Report

# **FY2008 Marshall County Central Point of Coordination Annual Report**

---

## **Department Activity**

- Continued providing a licensed social worker to serve approximately 100 consumers not covered by targeted case management.
- Vice-Chair - Department of Human Services Ames Area Advisory Board
- Chair – Department of Human Services Targeted Case Management Advisory Board
- Member Iowa Department of Vocational Rehabilitation Services Community Rehabilitation Program Advisory Board
- Department of Human Services Multi Disciplinary team – transition
- Iowa State Association of Counties (ISAC) Spring and Fall School
- ISAC Community Services Treasurer
- CPC Statewide Meetings
- Monthly CSC/CPC Regional Meetings
- Home and Community Based Services (Waiver) quarterly meetings
- ISAC Community Services: Legislative Review Committee & Training Committee
- Member Transition Advisory Board through Area Education Agency 267
- County Rate Information System (CRIS) Board of Directors
- Member Local Homeless Coordinating Board
- Member Iowa Valley Career Development Program Advisory Council
- Steering Committee member for the County Services Network (CSN) to replace CoMIS

# **FY2008 Marshall County Central Point of Coordination Annual Report**

---

FY08 activity:

The Marshall County CPC Administrator and Social Worker have been active participants in the Local Homeless Coordinating Board with an agency report each month and complete the updates of a Community Resource Guide for the use of all participants.

The CPC continues to serve as a Regional Team Member to serve in the Ames district for the Iowa Model of Supported Employment.

To increase awareness the web site of the Marshall County Central Point of Coordination was continually updated. Included on the web site is the agenda of the advisory board meetings, posting of minutes of each meeting, copies of the annual report and the County Management Plan. The web site is listed on department business cards, brochures, letterhead and other correspondence.

The County Social Worker is an active member of the Community Services Clearinghouse to collaborate and coordinate with all local Community Service agencies providing monthly agency updates.

The CPC office is active with the AEA267 transition advisory board to coordinate with all schools and agencies to provide a smooth transition from school to adult services.

## **Quality Assurance:**

The following surveys from the Department of Human Services Targeted Case Management and the Marshall County Social Worker do not show any indication of areas to target for changes.

In addition to surveys, we continually meet informally with parents, providers and individuals with disabilities. Our open working relationship with local providers does not require a survey to discuss problems or changes needed.

We meet regularly with targeted case management to inform them of budget, billing or consumer issues.

We have not had any appeals in FY08 and continue to strive to offer services that meet the needs of individuals with disabilities.

To assure funding has been approved and rates are correct on accounts payable, Marshall County enters all authorizations into an excel spreadsheet and also into CoMIS.

# FY2008 Marshall County Central Point of Coordination Annual Report

---

## 2007 DHS Targeted Case Management Consumer Survey Marshall County Results 24 Surveys returned

### Consumer or Guardian Completed

Consumer	12	50.00%
Guardian	9	38.00%
DNA	3	13.00%

### Do you know how to contact your case manager?

Y	22	92.00%
N	2	8.00%
DNA	0	0.0%

### Does your case manager understand what you can do and what you need?

Y	24	100.00%
N	0	0.0%
DNA	0	0.0%

### Does your case manager respect your skills and abilities?

Y	22	92.00%
N	0	0.00%
DNA	2	8.00%

### Do you decide what kinds of activities and services you want?

Y	20	83.00%
N	3	13.00%
DNA	1	4.00%

### Did you set the goals in your case management plan?

Y	17	71.00%
N	2	8.00%
DNA	5	21.00%

### Prior to your meetings to plan your goals, do you meet with your case manager?

Y	20	83.00%
N	1	4.00%
DNA	3	13.00%

### Do you talk in your meetings?

Y	23	96.00%
N	0	0.00%
DNA	1	4.00%

### Are you satisfied with the service you receive from your case manager?

Y	35	96.00%
N	0	0.00%
DNA	1	4.00%

### KEY:

**Yes-F**= Yes a Friend or Relative

**Yes-E**= Yes an Employee of an agency where I receive services

**Yes-CM**= Yes my Case Manager

**Guard**= Guardian helped

**No**= I completed it myself

**Y**= Yes

**N**= No

**DNA**= Did not answer

# FY2008 Marshall County Central Point of Coordination Annual Report

---

## FY08 CPC/Social Worker Survey Results 7 Surveys returned (23%)

**This survey was sent out to 50% of the consumers served by the CPC social worker.**

1. *Do you currently receive service(s) from a provider agency?*  
(Center Associates, CIRSI, MIW, Career Development Center, North Star)  
Yes - 4 No - 2 Blank - 1
2. *If yes, how did your services begin?*  
I decided to receive services myself - 0  
Others encouraged me to start services - 3  
My services were court ordered - 0  
Other - 4
3. *I realize that I may need to request county funding for my services.*  
Yes - 3  
No - 0  
Does Not Apply - 4
4. *I was treated with respect as I applied for county funding.*  
Yes - 4  
No - 0  
Does Not Apply - 3
5. *When working with the service provider and/or CPC staff they clearly explained what was expected of me.*  
Yes - 3  
No - 0  
Does Not Apply - 4
6. *Getting the services I need was easy.*  
Yes - 5  
No - 0  
Does Not Apply - 2
7. *The fee charged, if any, was fair for the service(s) I received.*  
Yes - 3  
No - 0  
Does Not Apply - 4
8. *The length of time taken to respond to my request was good.*  
Yes - 4  
No - 0  
Does Not Apply - 3
9. *I was offered choices of the services available.*  
Yes - 4  
No - 0  
Does Not Apply - 3
10. *I was satisfied with my choice in service provider and would return again if needed.*  
Yes - 4  
No - 0  
Does Not Apply - 3

# FY2008 Marshall County Central Point of Coordination Annual Report

---

11. *Services in Marshall County have helped me become more independent.*  
Yes – 4  
No – 1  
Does Not Apply – 2
12. *The services I have received have helped me in living and socializing in my community of choice.*  
Yes – 5  
No – 0  
Does Not Apply – 2
13. *Overall, I am satisfied with the service system in Marshall County.*  
Yes – 6  
No – 0  
Does Not Apply – 1
14. *Does the person receiving services live in Marshall County?*  
Yes – 5      No – 2      Blank – 0
15. *Age of person receiving services?*  
0 – (0-5)    0 – (6-18)    1 - (19-30)    3 - (31-45)    2- (46-64)    1 - (65 or over)
16. *Gender of person receiving services:*    4 - Male    3 – Female    Blank - 0
17. *Where does the person receiving services currently live?*  
1 - At home with family  
1 - Alone  
0 - With Friends  
1 - In a group home  
3 - Institutional living  
0 - Homeless  
1 – Other or Blank
18. *Person filling out the survey:*  
1 - Person receiving services  
4 - Guardian  
2 - Family member  
0 - Other (Staff)  
0 - Peer Interviewer

# FY2008 Marshall County Central Point of Coordination Annual Report

---

## MANAGEMENT PLAN GOALS REVIEW

Goal #1 – Transition Goal for the Elderly
---

The Marshall County MH/DD Advisory Committee shall identify and facilitate implementation of policy and procedures to ensure the elderly individuals in our system are receiving the appropriate services including the appropriate funding source.

This goal will be completed by 6-30-09.

**Milestone 1a** -The Marshall County MH/DD Advisory Committee shall request Case Manager's and Social Worker's to identify and review individuals on their caseloads 64 years and older to ensure they are receiving the appropriate services through the appropriate funding source.

**Measurement:**

Report at the end of year one will include the number of consumers served age 64 or older, the date the service was reviewed, the current service and the outcome of the review.

This milestone shall be completed by 6-30-07.

**FY07 Report:**

A total of 40 different individuals were served in FY07 that were over age 64. Of those 40, 26 persons received funding only because of a Chapter 229 mental health court commitment. 5 individual's accessed only outpatient mental health services and 1 transitioned to an ICF (nursing home) level of care during FY07.

Of the remaining 8, all have been assessed by the social worker or case manager to make sure they are in the appropriate service with the appropriate funding source. 5 are in a Residential Care Facility and do not meet the level of care for a nursing home. 2 individuals are in 24 hour a day MR Waiver supported community living services and one is in his own apartment with minimal hours of supported community living and his specific needs can not be met by other sources.

**Milestone 1b** -From the information secured in milestone 1a, the CPC shall secure local providers if alternative services or funding sources are identified.

**Measurement:**

The annual report will outline the action taken to identify alternative services and will identify options available.

This milestone shall be completed by 6-30-08.

# FY2008 Marshall County Central Point of Coordination Annual Report

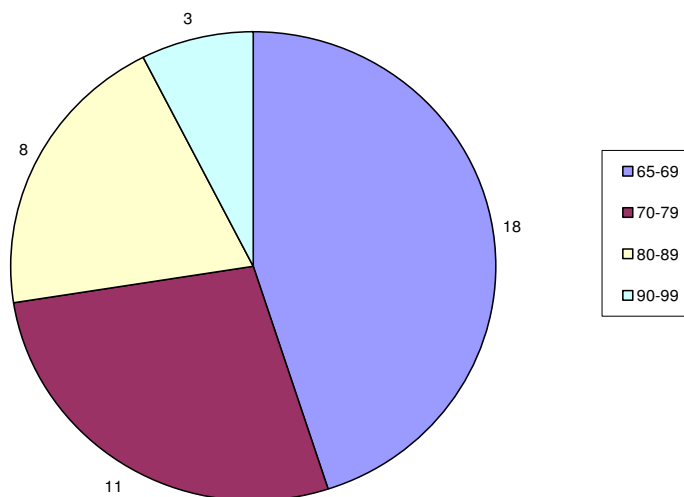
## FY08 Report:

A total of 40 different individuals were served in FY08 that were over age 64. Of those 40, 27 persons received funding only because of a Chapter 229 mental health court commitment. 3 individual's accessed only outpatient mental health services and 2 transitioned to an ICF (nursing home) level of care during FY08.

Of the remaining 8, all have been assessed by the social worker or case manager to make sure they are in the appropriate service with the appropriate funding source. 4 are receiving daily MR services and 4 are receiving daily CMI services.

The highest utilization of services for those over age 64 is for mental health commitments. We will continue to work with the County Attorney's office and Judges to offer options other than a mental health commitment. Marshall County participated in a 3 part ICN in October 2007 by the Iowa Department of Elder Affairs to identify services available. We will routinely access funding for services designated for the elderly when possible.

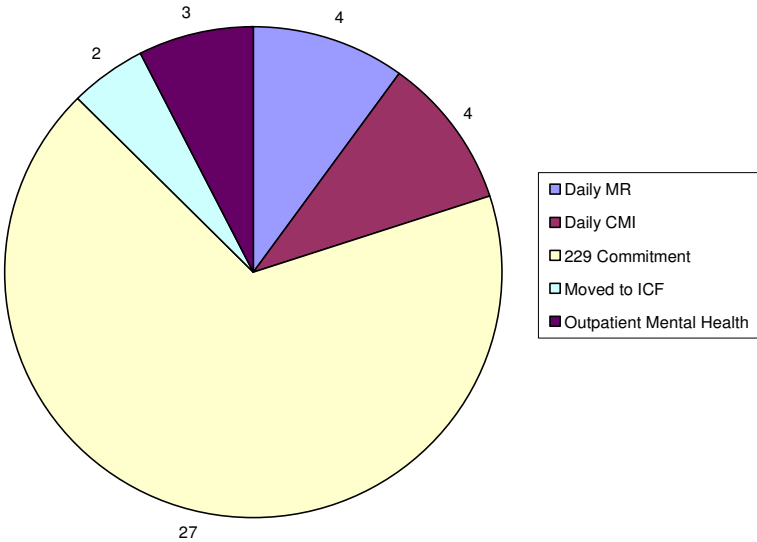
**Age of Elderly accessing services**



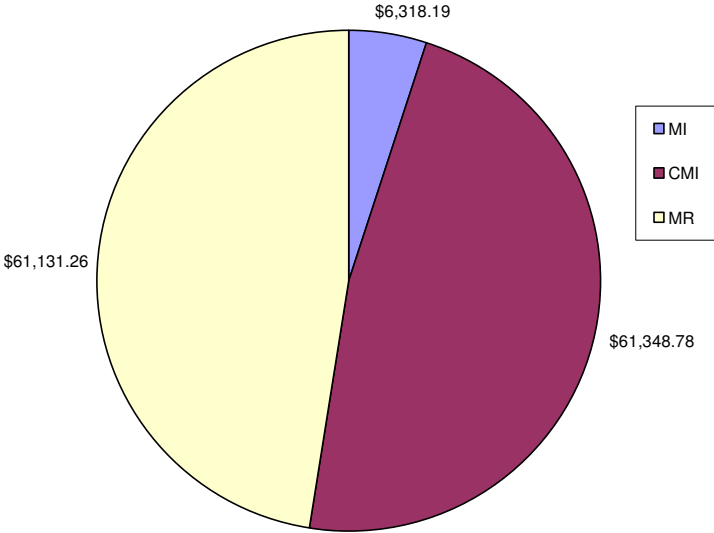
# FY2008 Marshall County Central Point of Coordination Annual Report

---

MH/DD Services Received



Cost by Population



# FY2008 Marshall County Central Point of Coordination Annual Report

---

<b>Goal #2 – To Promote Supported Employment Opportunities</b>
--

The Marshall County MH/DD Advisory Committee shall identify ways to promote supported employment. This will be accomplished by identifying key providers and individuals that have interests in increasing opportunities.

This goal will be completed by 6-30-09.

**Milestone 2a-** Determine the readiness and availability of Iowa Vocational Rehabilitation and their contractor(s) of Supported Employment including current open files. Identify Social Security Administration Work Incentive programs. Identify the number of individuals in Sheltered Workshop or Work Activity programs and the number of individuals in Supported Employment. Milestone 2a to be completed by 6-30-07.

**Measurement & FY07 Report:**

The implementation of the Iowa Model for Supported Employment will benefit persons in Marshall County to work with our provider Goodwill Industries of Central Iowa for supported employment.

The Social Security Work Incentives are complex and change often. The CPC and Social Worker attended the Work Incentive Seminar conducted by the local Social Security office and we have the contact information and literature for the Iowa Work Incentives Planning and Assistance (WIPA) workers. With the information we have, we will be able to assist persons to contact Social Security or WIPA for the most recent and comprehensive information.

Report on number of consumer days served in Sheltered Workshop – 1074 units and Work Activity programs 6652 units.

Iowa Vocational Rehabilitation reports they have 214 cases in active status in Marshall County.

9 Files were closed with successful job placements in FY07

3 Files were closed without placements in FY07

Marshall County funded 10 people for supported employment in FY07

**Milestone 2b-** Obtain the criteria of Iowa Vocational Rehabilitation and the contractor(s) of Supported Employment for Marshall County to transition an individual to supported employment.

Identify the number of consumers who have been identified as ready for supported employment or already in community jobs but also in sheltered workshop or work activity.

# FY2008 Marshall County Central Point of Coordination Annual Report

---

## **Measurement & FY08 Report:**

Report outlining the criteria to transition individuals into supported employment including the number of individuals with vocational recommendation as job placement and the number of individuals working both in the community and also in a sheltered setting.

To be completed by 6-30-08.

In FY08 Marshall County funded 928 hours of supported employment for 18 different individuals.

Of the 18 individuals served, one transitioned from sheltered workshop to community employment with supported employment services, 12 worked only in the community with supported employment services and 5 worked in both workshop/work activity services and in the community with supported employment.

Of 34 individuals in the local sheltered workshop, 1 is currently working with Iowa Vocational Rehabilitation to obtain a community job. 2 have expressed an interest in community employment however the guardians and the provider do not support the consumer's choice.

Iowa Vocational Rehabilitation reports they have 184 cases in active status in Marshall County.

3 Files were closed with successful job placements in FY08

6 Files were closed without placements in FY08

# FY2008 Marshall County Central Point of Coordination Annual Report

---

<b>Goal #3 - Matrix assessment for Developmental Disability population</b>
--

This Administrative goal is to meet the changing needs of financial constraints in the MH/DD Fund. The MH/DD Advisory Committee shall examine the services offered and appropriate level of funding to the Developmental Disability population. This goal to be completed by 6-30-09

**Milestone 3a-** Evaluate cost of and number of consumers currently being served under the Developmental Disability program.

**Measurement:**

Report at the end of this year will show the number of person served under the developmental disability diagnosis, what services they receive, cost of service and how long they have been receiving services.

This milestone to be completed by 6-30-07.

**FY07 Report:**

For FY07 Marshall County served 10 individuals with DD as their diagnosis, the cost represents 3.2% of expenditures.

- 7 are involved with sheltered workshop/work activity or supported employment programs.
- 1 individual resides in a ICF/MR for 24 hour care
- 2 individuals receive supported community living hourly services
- 1 individual resides in an residential care facility
- 3 receive Targeted Case Management services

Out of the 10 individuals, one has ended services, 3 have been in services longer than 10 years, 4 individuals between 5 and 9 years and 2 individuals in services less than 5 years.

**Milestone 3b-** Identify the individuals who apply or are identified that may enter the system for services under the Developmental Disability diagnosis.

The matrix of services will be reviewed with the MH/DD advisory board to provide information of mandated services and non-mandated services.

**Measurement:**

The annual report will track the new applications for FY08 outlining the different groups of individuals to include children to adult transition, adults not currently served, individuals with a brain injury that occurred before the age of 22.

The report will include documentation of the review of the matrix.

# FY2008 Marshall County Central Point of Coordination Annual Report

---

**FY08 Report:**

There have not been any new applications for a person with a developmental disability. Marshall County continues to serve 10 individuals in this population group. The cost of services has remained steady or decreased as outlined in the chart below.

<b>FY05</b>	<b>FY06</b>	<b>FY07</b>	<b>FY08</b>
\$136,046.33	\$117,952.58	\$109,505.02	\$111,322.51

# FY2008 Marshall County Central Point of Coordination Annual Report

---

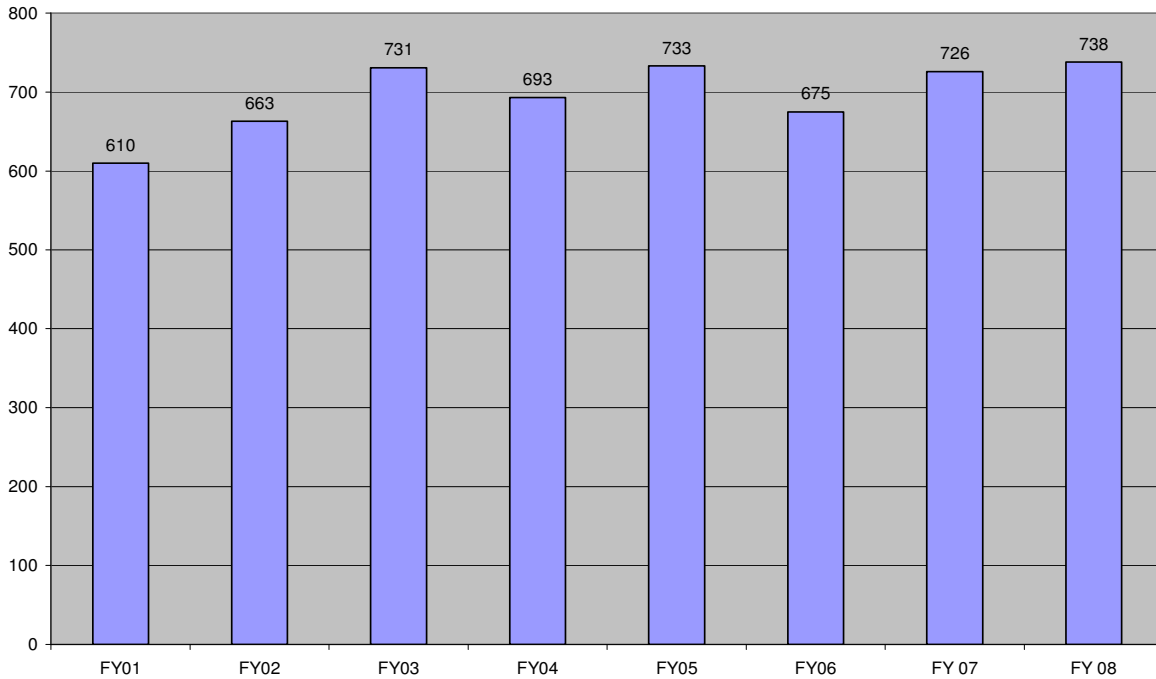
## FY 08 ACTUAL PROVIDER NETWORK

ABBE CENTER FOR COMMUNITY CARE	LINN COUNTY COMMUNITY SERVICES
ALEGENT HEALTH - THE MERCY CENTER	MAHASKA COUNTY HOSPITAL
ASSOCIATES FOR BEHAVIORAL HEALTHCARE	MAHASKA DRUG
BLACK & HINSHAW, P.L.C. ATTORNEYS AT LAW	MAINSTREAM LIVING/SCDC
BLACK HAWK-GRUNDY MENTAL HEALTH CENTER	MALLARD VIEW INC.
BROADLAWNS MEDICAL CENTER	MARSHALL COUNTY SHERIFF
CENTER ASSOCIATES MENTAL HEALTH CENTER	MARSHALLTOWN MUNICIPAL TRANSIT
CENTRAL IOWA RESIDENTIAL SERVICES	MARY GREELEY MEDICAL CENTER
CHATHAM OAKS, INC	MEDICAP PHARMACY-MARSHALLTOWN
CHEROKEE COUNTY SHERIFF DEPT.	MENTAL HEALTH CLINIC OF TAMA COUNTY
CHEROKEE MENTAL HEALTH INSTITUTE	MID-IOWA WORKSHOPS INC.
CLAY COUNTY SHERIFF	MOOTHART LAW FIRM
COMPREHENSIVE SYSTEMS	MURRAY LAW OFFICE
COUNTRY LIVING CARE CENTER	NEW FOCUS, INC.
COVENANT MEDICAL CENTER	NEW HOPE VILLAGE
DENNIGER, KRISTIN ATTORNEY AT LAW	NORTH CENTRAL IOWA MHC
DEPARTMENT OF HUMAN SERVICES	NORTH IOWA TRANSITION CENTER
DIAMOND LIFE HEALTH CARE INC.	NORTH IOWA VOCATIONAL CENTER
EAST CENTRAL IOWA ACUTE CARE	NORTH STAR COMMUNITY SERVICES
ELLSWORTH MUNICIPAL HOSPITAL	OAK HAVEN CARE FACILITY
EYERLY-BALL MENTAL HEALTH CENTER	PRIMARY HEALTH CARE
FRANKLIN COUNTY SHERIFF	PROGRESS INDUSTRIES
GEFFE, KENT	QUALITY CHOICES
GENESIS DEVELOPMENT	RICKERT & LEISTIKOW, P.C. ATTORNEYS
GOEKE & RASMUSSEN ATTORNEYS AT LAW	SCHICKEL, CANDILA ATTORNEY AT LAW
GOODWILL INDUSTRIES OF CENTRAL IOWA	SEASONS CENTER FOR COMMUNITY MH
GRUNDY COUNTY SHERIFF	SPECTRA HEALTH CARE
HAUPERT, LEE	ST LUKE'S HOSPITAL
HEARTLAND FAMILY SERVICE	STORY COUNTY COMMUNITY LIFE
HERITAGE RESIDENCE OF COMMUNITY CARE, INC	STORY COUNTY SHERIFF
HILLCREST FAMILY SERVICES	TENCO INDUSTRIES, INC.
HY-VEE PHARMACY	THE PRIDE GROUP
IOWA VALLEY COMMUNITY COLLEGE DISTRICT	THE RICHMOND CENTER
JOHANSEN, RANDY ATTORNEY AT LAW	THOMPSON, JOHN L. ATTORNEY AT LAW
JOHNSON COUNTY SHERIFF DEPT	WALSH LAW FIRM
KATHLEEN'S CARE INC.	WELP, WILLIAM A. ATTORNEY AT LAW
KMART PHARMACY #7583	

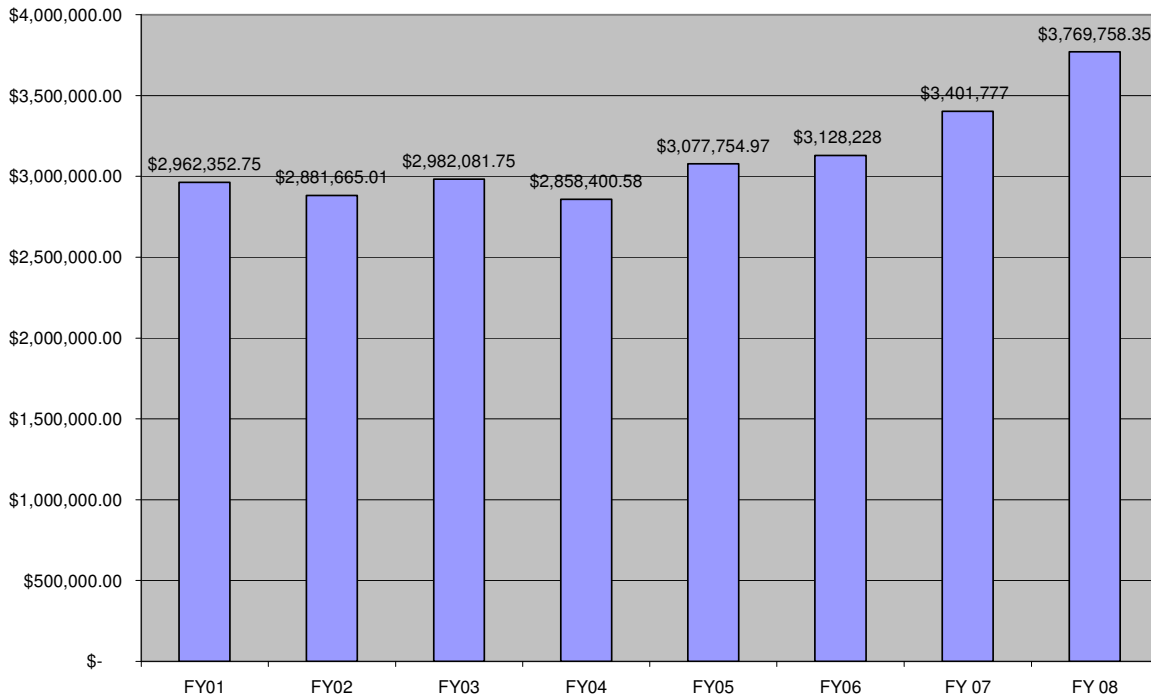
# FY2008 Marshall County Central Point of Coordination Annual Report

## Summary of Historical Services:

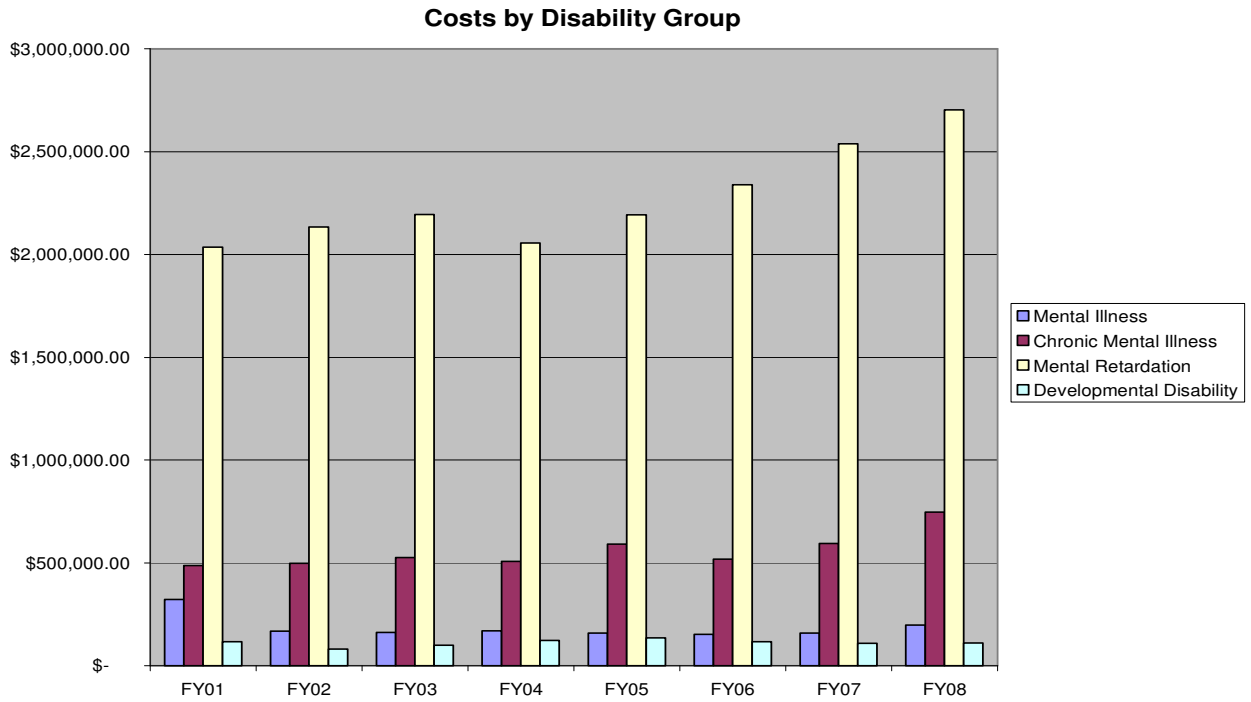
**Total number of persons served for MH/MR/DD services**



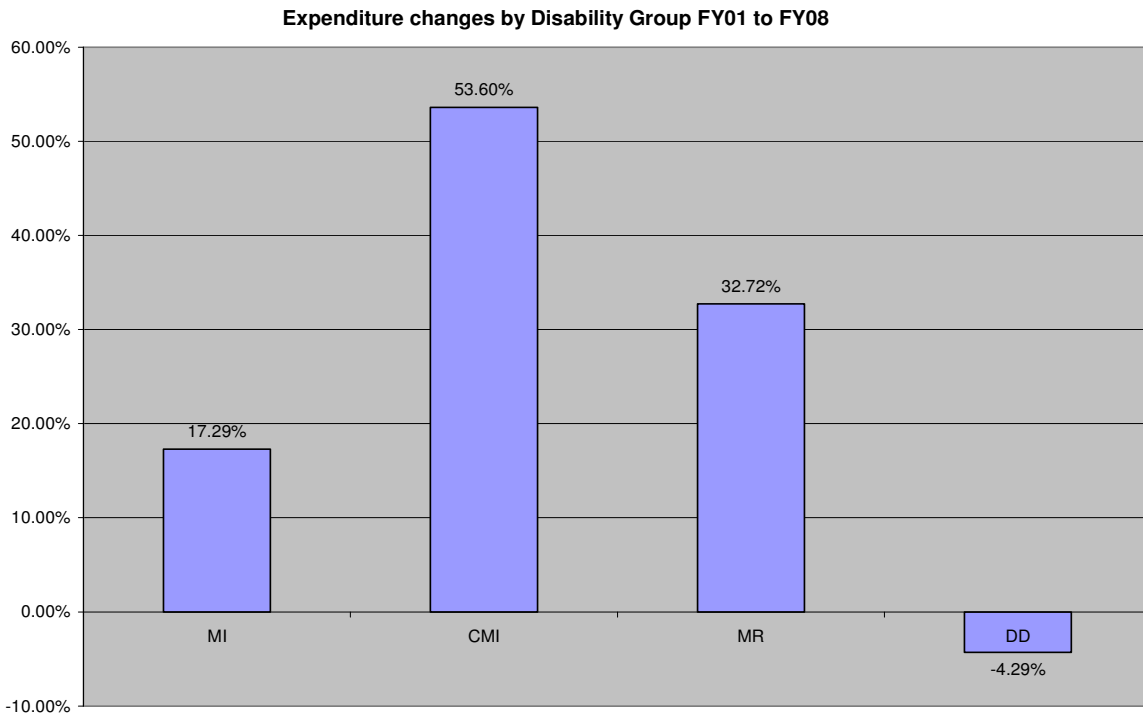
**Total Expenditures for MH/DD Fund**



# FY2008 Marshall County Central Point of Coordination Annual Report



The charts above show that Marshall County has experienced a 21% increase in consumers served from FY01 through FY08 however the number have remained steady between 731 and 738 from FY03 through FY08. The second chart shows that costs have increased 27% from FY01 through FY08.



**FY2008 Marshall County  
Central Point of Coordination  
Annual Report**

**County Dollars Spent by COA Code and Disability Type**

<b>Account Code</b>	<b>Mental Illness</b>	<b>Chronic Mental</b>	<b>Mental Retardation</b>	<b>Developmental I Disability</b>	<b>Other</b>	<b>Service Total</b>
<b>11000</b> Direct administrative	\$5,707.00	\$19,119.00	\$78,688.00	\$3,572.00		<b>\$107,086.00</b>
<b>21374</b> Case Management - T19 Match		\$4,753.06	\$52,859.68	\$1,186.28		<b>\$58,799.02</b>
<b>21375</b> Case Management - 100% County		\$0.00				<b>\$0.00</b>
<b>22000</b> Service Management	\$2,471.00	\$8,714.00	\$37,574.00	\$1,742.00		<b>\$50,501.00</b>
<b>31000</b> Transportation (non-Sheriff)		\$204.95	\$36,658.61			<b>\$36,863.56</b>
<b>32322</b> Home Management Services (include PERS)			\$107.20			<b>\$107.20</b>
<b>32325</b> Respite			\$29,656.48			<b>\$29,656.48</b>
<b>32327</b> Representative Payee		\$170.00				<b>\$170.00</b>
<b>32328</b> Home/Vehicle Modification			\$1,628.16			<b>\$1,628.16</b>
<b>32329</b> Supported Community Living			\$49,323.90			<b>\$49,323.90</b>
<b>32399</b> Other			\$27,271.28			<b>\$27,271.28</b>
<b>41306</b> Physiological Tmt. Prescription Medicine	\$76.31	\$1,497.56				<b>\$1,573.87</b>
<b>42305</b> Psychotherapeutic Tmt. Outpatient	\$78,201.31	\$30,298.39				<b>\$108,499.70</b>
<b>50360</b> Sheltered Workshop Services		\$11,752.22	\$235,297.68	\$23,552.50		<b>\$270,602.40</b>
<b>50362</b> Work Activity Services		\$48.72	\$181,079.72	\$8,514.40		<b>\$189,642.84</b>
<b>50367</b> Adult Day Care		\$2.33	\$57,950.33			<b>\$57,952.66</b>

## FY2008 Marshall County Central Point of Coordination Annual Report

Account Code	Mental Illness	Chronic Mental	Mental Retardation	Developmental I Disability	Other	Service Total
<b>50368</b> Supported Employment Services		\$4,344.81	\$5,507.05	\$138.52		<b>\$9,990.38</b>
<b>50369</b> Enclave			\$266.11			<b>\$266.11</b>
<b>63314</b> RCF (Comm. 1-5 Bed)		\$27,566.22				<b>\$27,566.22</b>
<b>63329</b> Supported Community Living (Comm. 1-5 Bed)		\$61,926.92	\$886,235.71	\$12,583.60		<b>\$960,746.23</b>
<b>64314</b> RCF (Comm. 6-15 Bed)		\$117,822.07	\$44,095.36	\$18,027.10		<b>\$179,944.53</b>
<b>64315</b> RCF/MR (Comm. 6-15 Bed)			\$8,684.40			<b>\$8,684.40</b>
<b>64316</b> RCF/PMI (Comm. 6-15 Bed)		\$108,532.60				<b>\$108,532.60</b>
<b>64318</b> ICF/MR (Comm. 6-15 Bed)			\$436,559.16	\$42,006.11		<b>\$478,565.27</b>
<b>65314</b> RCF (Comm. 16+ Beds)		(\$13.43)				<b>(\$13.43)</b>
<b>65316</b> RCF/PMI (Comm. 16+ Beds)		\$3,726.16				<b>\$3,726.16</b>
<b>71319</b> Inpatient (State MHI)	\$6,972.04	\$266,126.75				<b>\$273,098.79</b>
<b>72319</b> Inpatient (State Hosp. School)			\$533,259.88			<b>\$533,259.88</b>
<b>73319</b> Inpatient (Other Priv./Public Hospitals)	\$66,344.95	\$44,566.88				<b>\$110,911.83</b>
<b>74353</b> Sheriff Transportation	\$22,704.47	\$11,090.43				<b>\$33,794.90</b>
<b>74393</b> Legal Representation (cmtmt court costs/legal fees)	\$7,367.30	\$3,762.15				<b>\$11,129.45</b>
<b>74395</b> Mental Health Advocates	\$7,887.48	\$21,673.00				<b>\$29,560.48</b>
<b>Total County</b>	<b>\$197,731.86</b>	<b>\$747,684.79</b>	<b>\$2,702,702.7</b>	<b>\$111,322.51</b>		<b>\$3,759,441.87</b>

**FY2008 Marshall County  
Central Point of Coordination  
Annual Report**

---

**Mental Health System Growth / Loss Report**

DISABILITY GROUP	First Quarter	Second Quarter	Third Quarter	Fourth Quarter	Net Change
Chronic Mental Illness	106	95	107	105	-1
Mental Illness	176	177	177	201	25
Mental Retardation	166	163	165	162	-4
Other Developmental Disabilities	10	9	7	7	-3
	<b>458</b>	<b>444</b>	<b>456</b>	<b>475</b>	<b>17</b>

# FY2008 Marshall County Central Point of Coordination Annual Report

## Unduplicated Number of Persons Served by COA code and Disability Type

Account Code	Mental Illness	Chronic Mental Illness	Mental Retardation	Developmental I Disability	Other	Service Total
Adult						
<b>11000</b> Direct administrative	1	1	1	1		<b>4</b>
<b>21374</b> Case Management - T19 Match		9	117	4		<b>130</b>
<b>21375</b> Case Management - 100% County		1				<b>1</b>
<b>22000</b> Service Management	1	1	1	1		<b>4</b>
<b>31000</b> Transportation (non-Sheriff)		2	55			<b>57</b>
<b>32322</b> Home Management Services (include PERS)			1			<b>1</b>
<b>32325</b> Respite			31			<b>31</b>
<b>32327</b> Representative Payee	1					<b>1</b>
<b>32328</b> Home/Vehicle Modification			3			<b>3</b>
<b>32329</b> Supported Community Living			33			<b>33</b>
<b>32399</b> Other			4			<b>4</b>
<b>41306</b> Physiological Tmt. Prescription Medicine	1	13				<b>14</b>
<b>42305</b> Psychotherapeutic Tmt. Outpatient	264	55				<b>319</b>
<b>50360</b> Sheltered Workshop Services		7	45	4		<b>56</b>
<b>50362</b> Work Activity Services		1	32	1		<b>34</b>
<b>50367</b> Adult Day Care		1	20			<b>21</b>

## FY2008 Marshall County Central Point of Coordination Annual Report

Account Code	Mental Illness	Chronic Mental Illness	Mental Retardation	Developmental I Disability	Other	Service Total
<b>50368</b> Supported Employment Services		2	12	1		<b>15</b>
<b>50369</b> Enclave			1			<b>1</b>
<b>63314</b> RCF (Comm. 1-5 Bed)		1				<b>1</b>
<b>63329</b> Supported Community Living (Comm. 1-5 Bed)		26	78	1		<b>105</b>
<b>64314</b> RCF (Comm. 6-15 Bed)		17	4	1		<b>22</b>
<b>64315</b> RCF/MR (Comm. 6-15 Bed)			1			<b>1</b>
<b>64316</b> RCF/PMI (Comm. 6-15 Bed)		8				<b>8</b>
<b>64318</b> ICF/MR (Comm. 6-15 Bed)			12	1		<b>13</b>
<b>65314</b> RCF (Comm. 16+ Beds)		1				<b>1</b>
<b>65316</b> RCF/PMI (Comm. 16+ Beds)		3				<b>3</b>
<b>71319</b> Inpatient (State MHI)	4	13	1			<b>18</b>
<b>72319</b> Inpatient (State Hosp. School)			13			<b>13</b>
<b>73319</b> Inpatient (Other Priv./Public Hospitals)	31	16				<b>47</b>
<b>74353</b> Sheriff Transportation	89	46	2			<b>137</b>
<b>74393</b> Legal Representation (cmtmt court costs/legal fees)	66	39				<b>105</b>
<b>74395</b> Mental Health Advocates	88	69	2			<b>159</b>
Child						
<b>42305</b> Psychotherapeutic Tmt. Outpatient	8					<b>8</b>
<b>74395</b> Mental Health Advocates	27					<b>27</b>

**FY2008 Marshall County  
Central Point of Coordination  
Annual Report**

---

**Persons Served - Age Group by Primary Diagnostic Category  
For Marshall County FY 2008**

<b>DISABILITY GROUP</b>	<b>Children</b>	<b>Adults</b>	<b>Unduplicated Total</b>
Mental Illness	34	375	407
Chronic Mental Illness	0	146	146
Mental Retardation	0	175	175
Other Developmental	0	10	10
	<b>34</b>	<b>706</b>	<b>738</b>

# FY2008 Marshall County Central Point of Coordination Annual Report

---

## County Waiting List Report

Date Prepared 11/18/2008 For Marshall County FY: 2008

Waiting List	Mental Illness		Chronic Mental Illness		Mental Retardation		Other Developmental Disabilities		Total	
	Currently Receiving a Service	Unservd	Currently Receiving a Service	Unservd	Currently Receiving a Service	Unservd	Currently Receiving a Service	Unservd	Currently Receiving a Service	Unservd
<b>Total:</b>	0	0	0	0	0	0	0	0	0	0

While Marshall County does not have a current waiting list, we are continually monitoring expenditures with budget and meet with the MH/DD advisory board and targeted case managers to give them financial information. Our goal is to continue to assess requests with need VS wants.